

## VEHICLE TEST ACTIVITY

1. COMPANY OWNED TEST FLEET
2. ENGINE CHANGES
3. VEHICLE MODIFICATIONS
4. CONDUCT DEMONSTRATIONS
5. BASICALLY CONDUCTS ALL HIGHWAY TESTING  
OF TRACTOR-TRAILER UNITS
  - A. DRIVEABILITY (ENGINE RESPONSE)
  - B. ROAD COOLING PERFORMANCE
  - C. FUEL ECONOMY
  - D. ENDURANCE (ENGINES AND DRIVELINES)
  - E. IN CHASSIS TORSIONALS
  - F. COMPONENT STRESS/STRAIN
  - G. COMPONENT VIBRATION
  - H. ROAD PROFILING
  - I. COMPONENT PERFORMANCE  
FUEL SYSTEMS, GOVERNORS, ETC.  
BRAKING/RETARDING SYSTEMS  
STEERING  
FAN HP STUDIES
  - J. EMISSIONS (EXHAUST)

## VEHICLE TEST - MAJOR EQUIPMENT

### 1. HIGHWAY TRACTORS - 15 UNITS

- (7) COEs
- (8) CONVENTIONALS
- (14) ARE TANDEM AXLE
  - (1) SINGLE AXLE
  - (2) OF COEs ARE 4-DOOR, 5-6 PASSENGER TYPE

### 2. HIGHWAY TRAILERS - 10 UNITS

- (1) PERFORMANCE DYNO TYPE
- (1) LOAD DYNO TYPE
- (3) 40 FOOT TANDEM VAN TYPE
- (2) 40 FOOT TANDEM DROP DECK
- (2) 23 FOOT SINGLE AXLE VAN
- (1) 37 FOOT (7200 GAL.) TANK TRAILER

## PERFORMANCE DYNO TRAILER

### SPECIFICATIONS

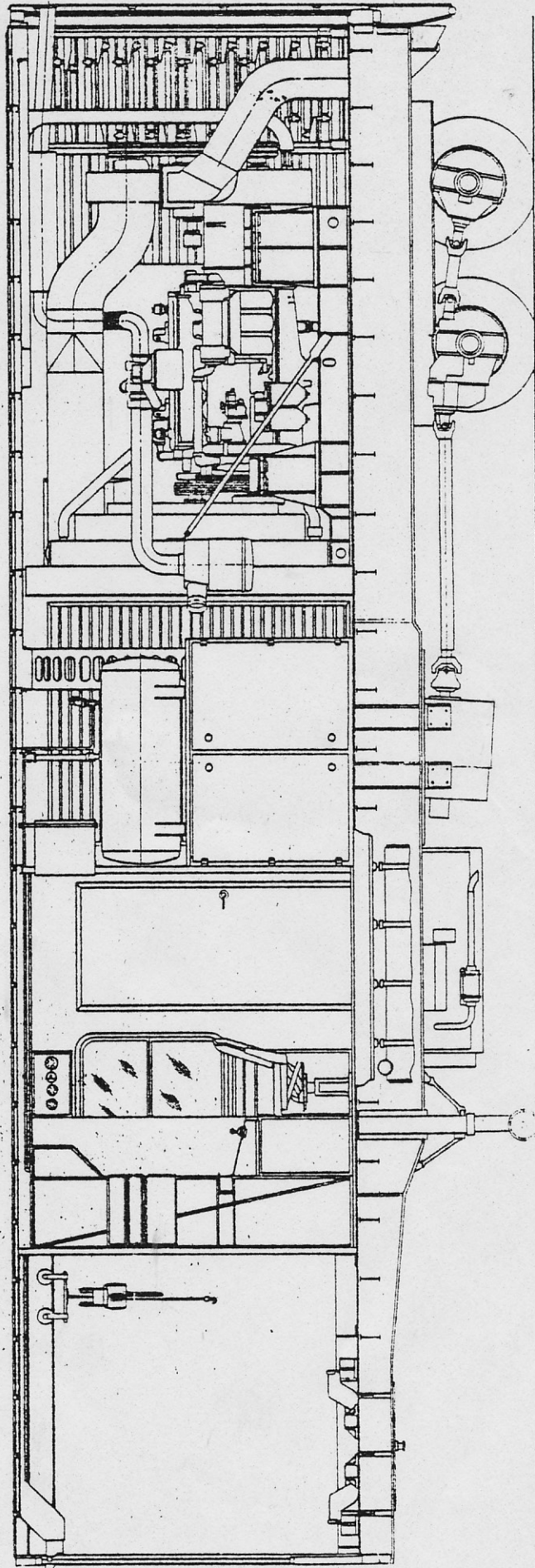
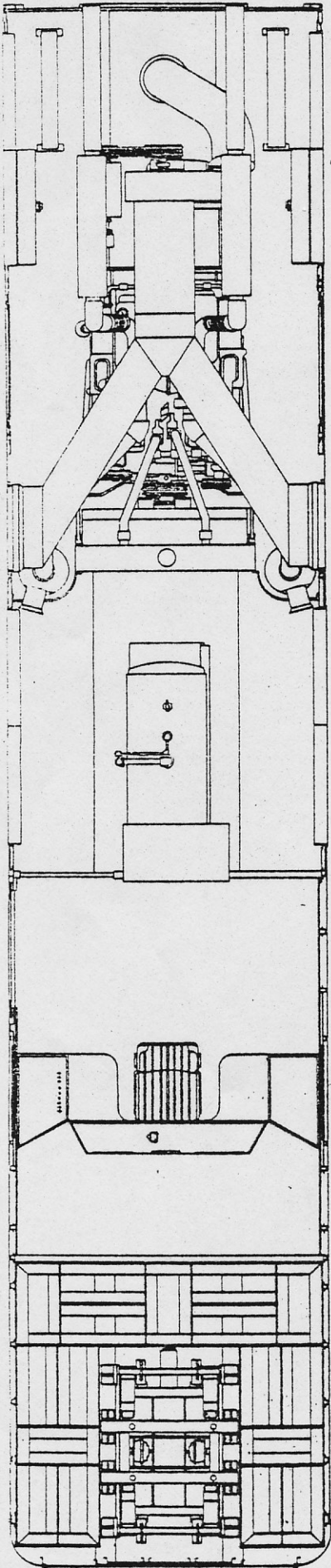
1. 40-FOOT TANDEM STAINLESS STEEL VAN WITH HEAVY DUTY UNDER FRAME.
2. 2-SPEED DRIVING TYPE AXLE (44,000 LB.) RATING.
3. DYNO-MOTING/ABSORPTION TYPE MODIFIED BY CUMMINS. ELECTRIC TYPE WITH RESISTANCE LOAD BANK.
4. VT-12 (1710) GENSET TO POWER DYNO FOR PROPULSION MODE.
5. 45 KW GENSET TO PROVIDE "FACILITY" POWER.
6. AIR COMPRESSOR.
7. INSTRUMENT/CONTROL ROOM - TV SYSTEM.
8. BALLASTING EQUIPMENT - RACKS, HOISTING, ETC.

### FUNCTIONS

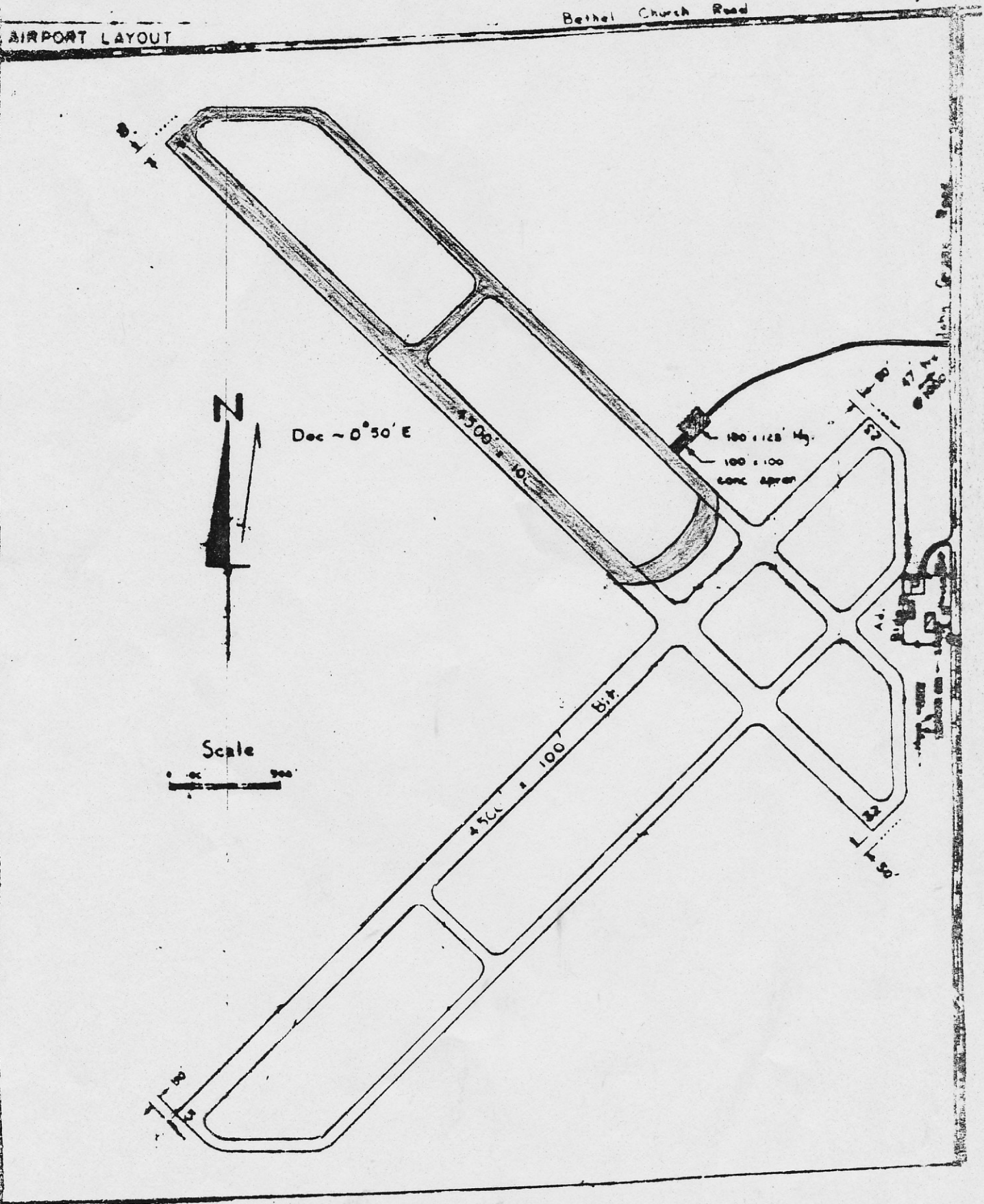
1. PROPEL TOWING VEHICLE - AGAINST ENGINE, BRAKES, RETARDERS, OVERSPEED, ETC.
2. LOADING (RETARDING) TOWING VEHICLE - MAINTAIN FULL OR CONSTANT LOAD OF VEHICLE POWER TRAIN.
3. MOBILE INSTRUMENT ROOM - TO MONITOR OR RECORD ALL DATA BEING TAKEN ON A GIVEN TEST.



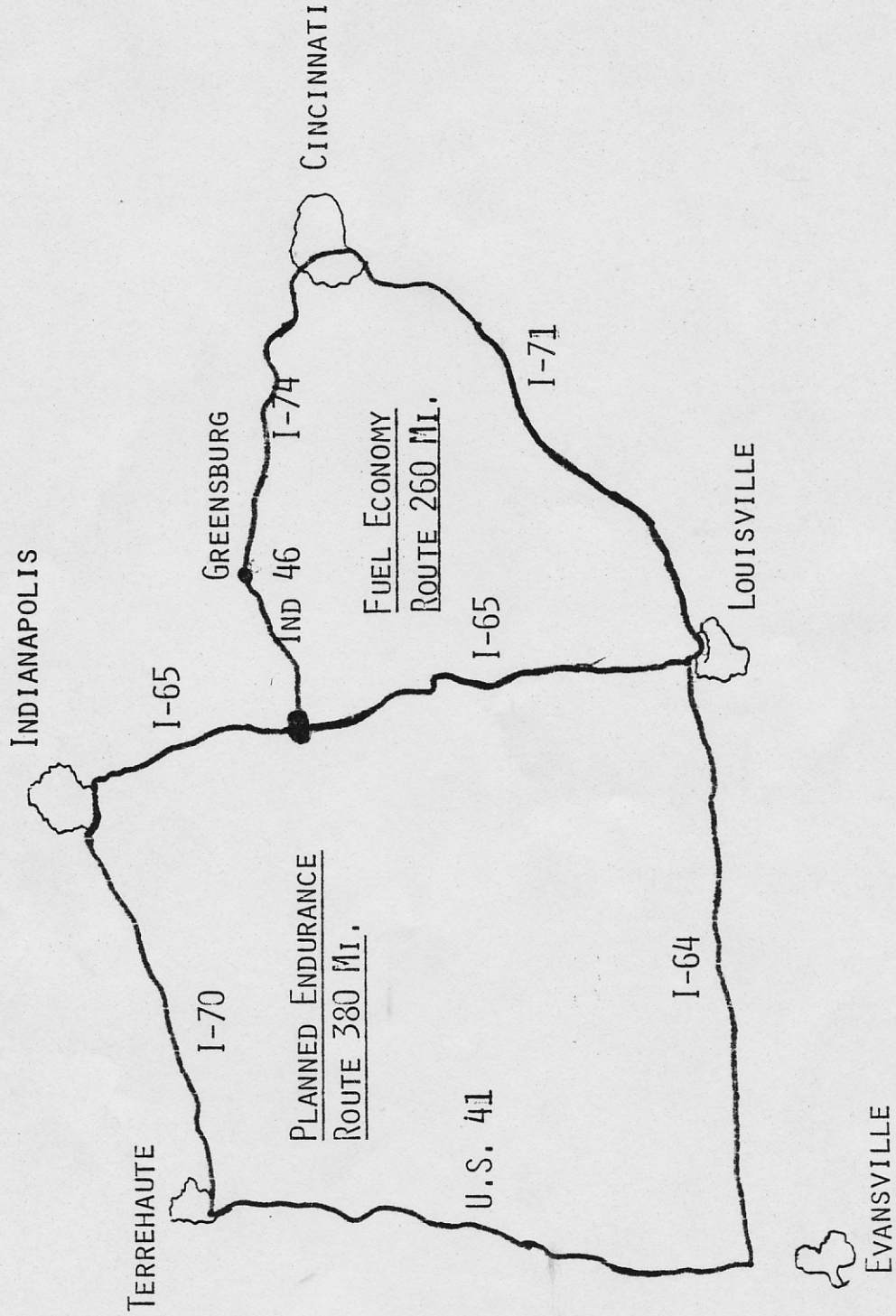
VEHICLE TEST PERFORMANCE DYNO TRAILER

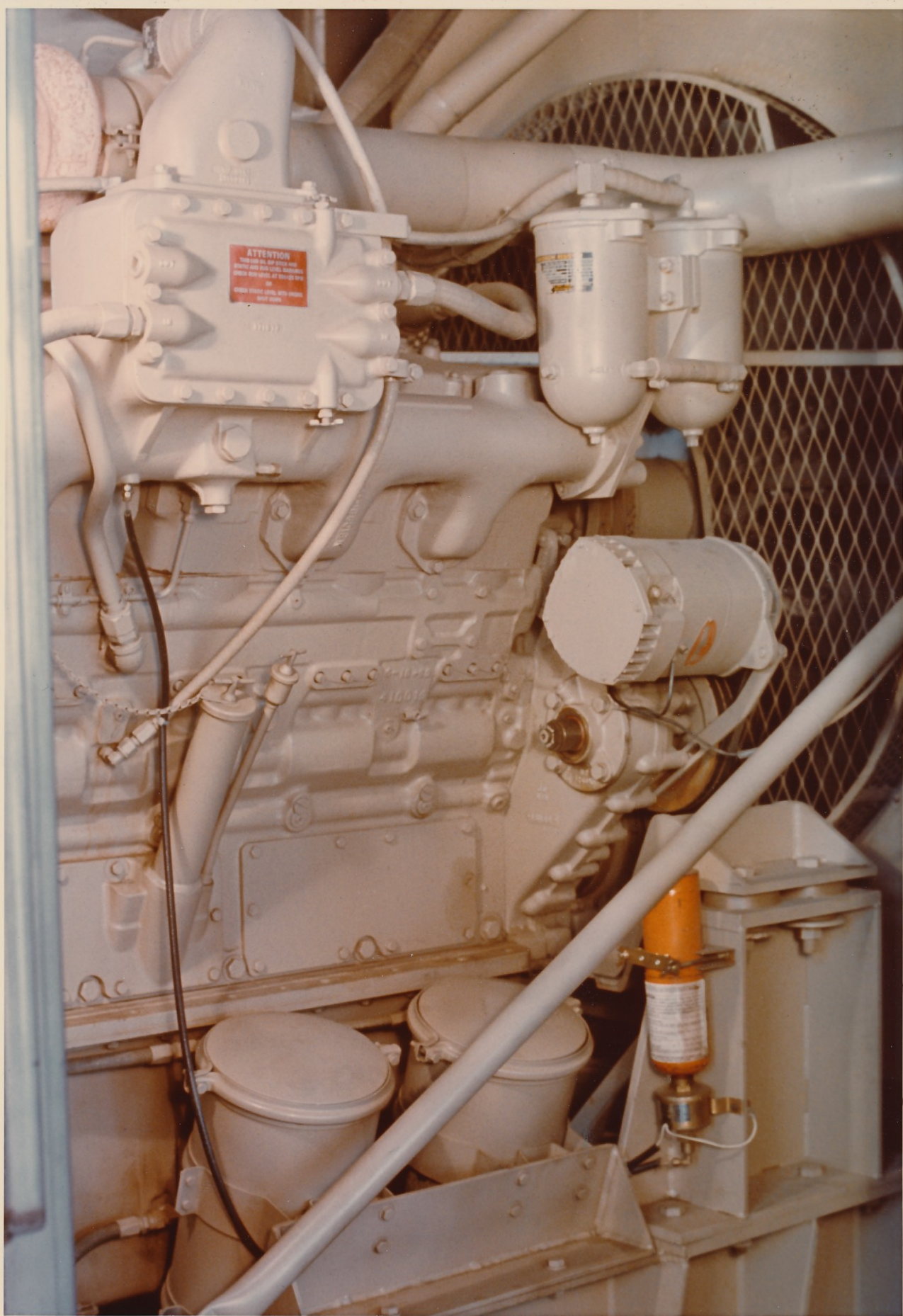


# Walesboro Test Site



VEHICLE TEST ROUTES

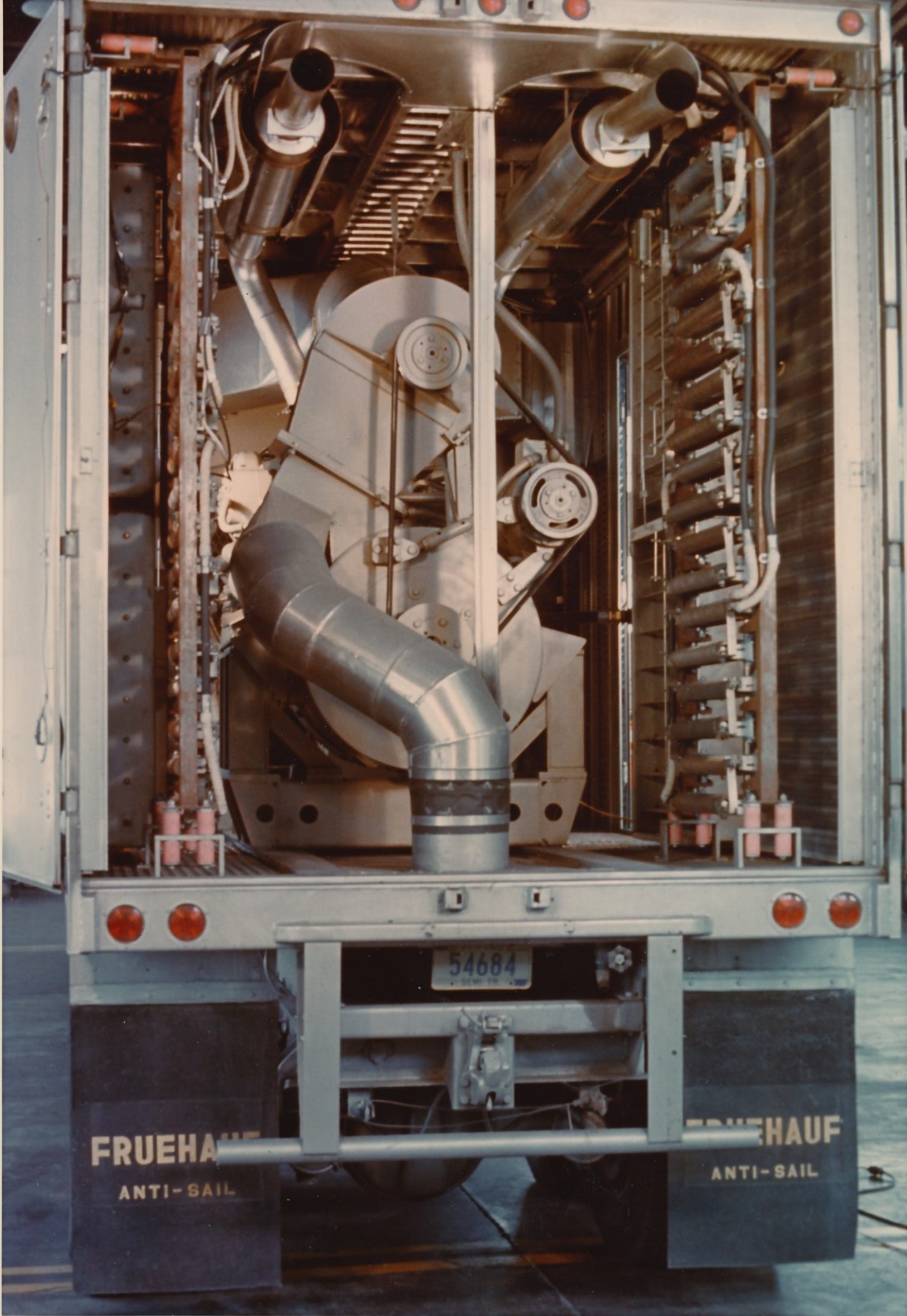




**ATTENTION**  
THE OIL ON TOP OF THIS AND  
OTHER OILS ARE TO BE KEPT  
CLEAN AND FREE FROM  
WATER AND DIRT AT ALL TIMES  
OR  
CHECK FROM TIME TO TIME  
AND OIL

41665

Orange tank label text (partially obscured)



**FRUEHAUF**  
ANTI-SAIL

54684

**FRUEHAUF**  
ANTI-SAIL







